

SANIFLO

APPLICATIONS



PUMPING DISTANCE



WARRANTY



Product Code:  
6006

Barcode:  
EAN 3308815074108



# SANIPRO<sup>®</sup> XR UP



**Installation of a complete bathroom.**

**Easy installation and maintenance:**  
Easy replacement of an old model.

Easy maintenance with  
access hatch to the basket.

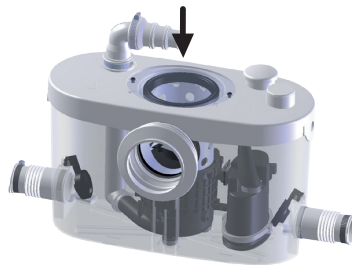


**Ideal for an en-suite.**

**Low noise level:** 46 dB(A).

**Reliable and efficient macerator system.**

CENTRAL ACCESS TO THE BASKET



- ➔ Direct access to the basket in case of blockage due to improper use of the device
- ➔ Without dismantling the device and without emptying the tank

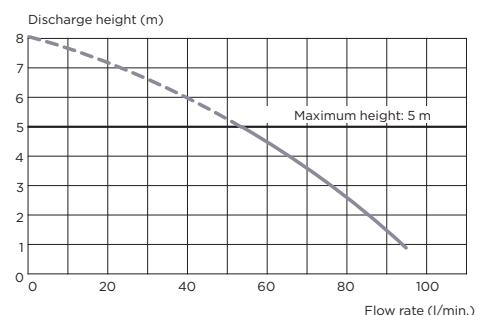
TECHNICAL FEATURES

Number of inlets available	4
Ø inlet	100/40 mm
Ø discharge pipework	22/28/32 mm
Motor power	400W
Voltage	220-240 V/50 Hz
Electrical class	Single phase
IP rating	IP44
Shower tray height	13 cm
Sound level	46 dB(A)
Weight	6.8 kg

PACKAGING

- SANIPRO<sup>®</sup> XR UP
- Non-return valve
- Connectors
- Activated carbon filter included, to neutralise odours

PUMP CURVE



For more technical information visit, [www.saniflo.co.uk](http://www.saniflo.co.uk)